

On time.

Engaging with questions of time and temporality in social research

A PGR workshop led by Dr Kahryn Hughes



#OnTimeUoL @FLAG_UoL

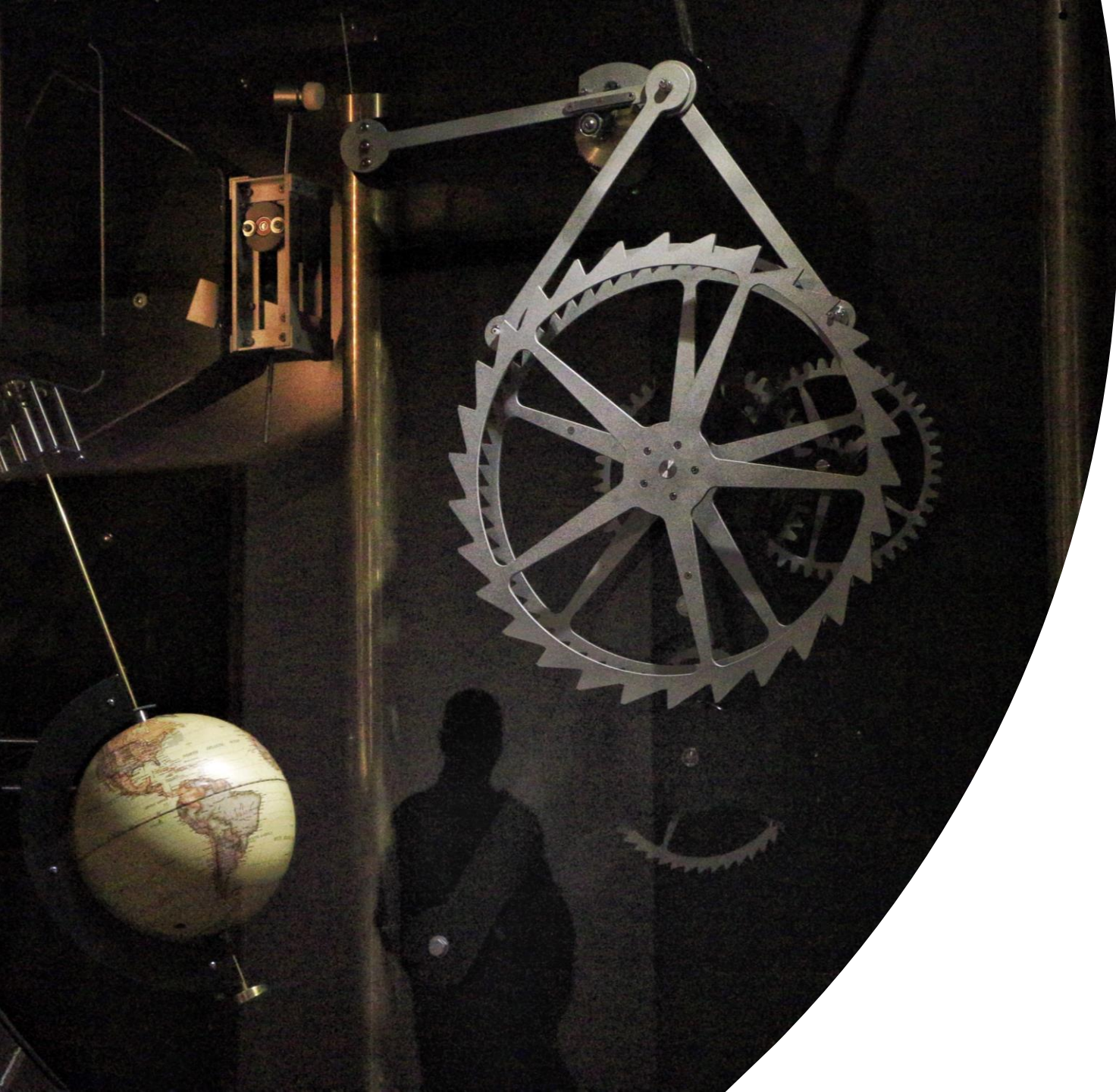
Centre for Research on Families,
Life Course & Generations (FLaG)

<https://flag.leeds.ac.uk/>

School of Sociology & Social Policy

Workshop Format

- | | |
|---------------|---|
| 10.05 - 10.35 | ‘On Time’ - Dr Kahryn Hughes |
| 10.35-10.55 | Transformations: Sex education in China, German integration politics
Chong Liu
Johanna Loock |
| 11.00 -11.20 | Covid-19 – A critical moment? Youth and family
Maria Mansfield
Karen Tatham |
| 11.20-11.40 | Imagined futures: Transitions to ‘adulthood’
Emma Hyde
Tomás Puentes León |
| 11.40- 12:00 | Final reflections ‘on time’ with Dr Kahryn Hughes
End of workshop |



PGR Theme 1

Transformations: Sex education in China & German integration politics...

*Presentations from Chong Liu
& Johanna Loock*

School of Sociology & Social Policy

Waves, Transformation and Sexuality Education

Understanding the Youth Experience in Contemporary China

Chong Liu
PhD Researcher
School of Sociology and Social Policy
University of Leeds
Email: SSCL@leeds.ac.uk



An observation at a street
food hall in Beijing

Summer, 2019

‘No Risk’ Love
&
‘No Death’ War



But what about the ones who are not ‘modernised’ enough?

“The uses of time and space are sharply differentiated as well as differentiating. Globalization divides as much as it unites; it divides as it unites – the causes of division being identical with those which promote the uniformity of the globe.” (p.2)

“Some of us become fully and truly ‘global’; some are fixed in their ‘locality’ – a predicament neither pleasurable nor endurable in the world in which the ‘globals’ set the tone and compose the rules of the life-game.” (p.2)

Rethink the youth experiences and social transformation.

Genealogy of Integration Politics

A Non-Linear Conception of History

Johanna Loock

PhD Project

Title

Paradoxes of Citizenship. German Integration Politics, Muslims, and National Identity

One important approach

- Genealogy of integration politics

Genealogy vs. „Traditional History“ (Foucault)

Traditional history

- search for an origin
- assumption of a teleological development
- reinterpretation of the past as a pre-history of the present

Genealogy

- consideration of many beginnings, peripheral incidents
- discontinuities of history
- power constellations and coincidence

Genealogy of Integration Politics

Construction of the nation and minorities

- Formation of the German Reich (1871)
- The so-called Jewish question (19th, 20th century)

Reconstruction of the national identity

- Arrival of homeland expellees and refugees (after WWII)
- Recruitment of so-called guest workers (1950s, 60s)
- Reunification (1990)

Challenges of Genealogy

Trap of traditional history

- identification of parallels
- reading of „the past in terms of the present“ (Foucault)

Example

- assimilatory character of integration politics
- assimilation of Jews in the 19th, 20th century



PGR Theme 2

COVID-19 – A critical moment? Youth & Family

*Presentations from Maria Mansfield
& Karen Tatham*

School of Education
School of Sociology & Social Policy



THE BENEFITS OF TIME?

EXPLORING HOLIDAY HUNGER IN LOW-INCOME ADOLESCENTS USING PARTICIPATORY RESEARCH

Maria Mansfield
School of Education
ss18mjm@leeds.ac.uk



RESEARCH CONTEXT

Holiday hunger: a lack of food and social stimulation during school holidays. Affects 3 million UK children.

Low-income families – free school meal support for 190 days of school, no support for 175 days of holiday.

No qualitative data on how it effects adolescents – I aim to explore their lives and coping strategies.

Field work: Easter 2020-Summer 2021.





COVID – A TIME OF CHANGE

Rapid change to holiday feeding support during Covid - Food Fund available til Easter 2021.

100 years of almost static policy – Covid and social movements bought change.

Will it remain, post-Covid?

My relationship with time – policy was static and I was trying to move fast – now I need to be static whilst everything around me moves.

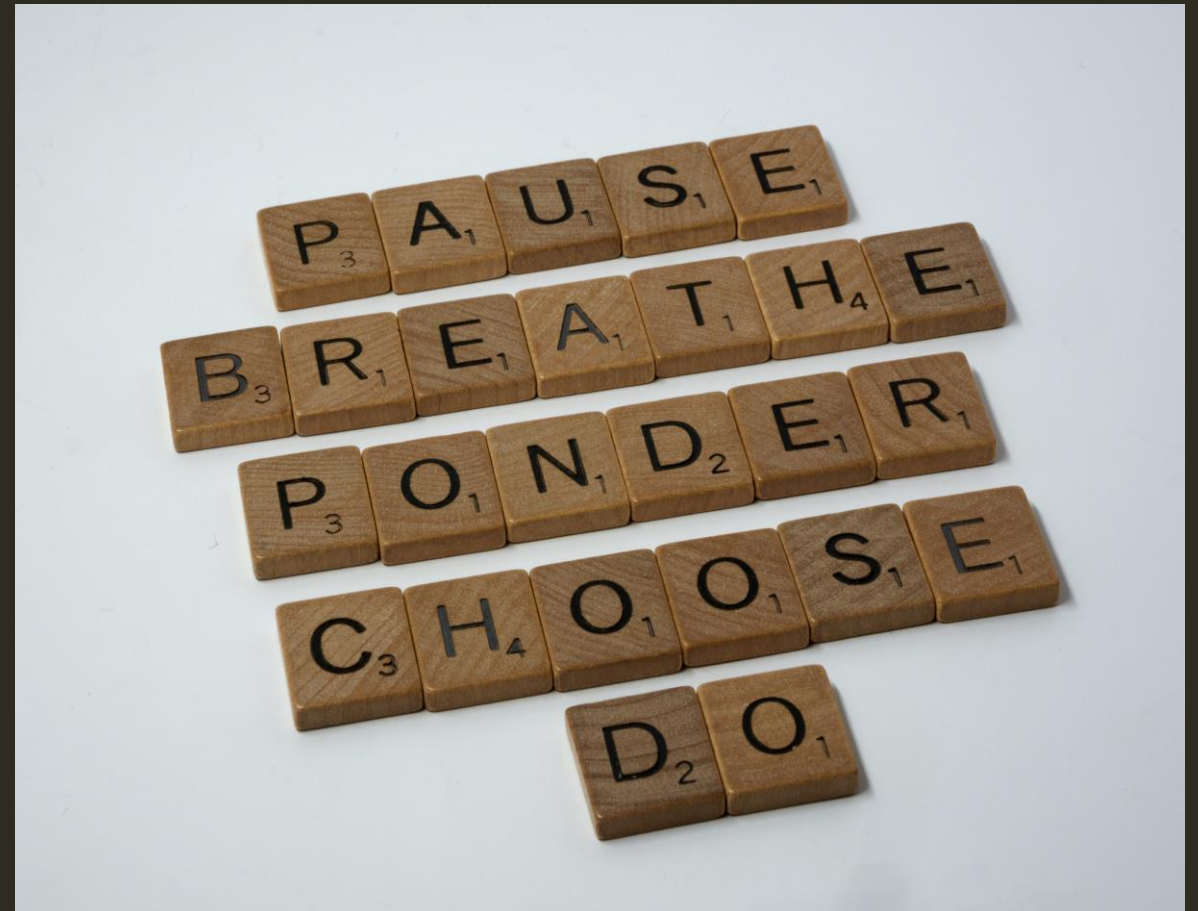
RETHINKING KNOWLEDGE PRODUCTION

Constraints on education sector forced me to rethink how to produce knowledge and access the field to produce participatory research.

New RQ: Covid Food Fund – does monetary food support make a difference to holiday experiences?

Same topic, but with adult caregivers.

The “field” is not a passive entity. It changes, and so we must change how we interact with it (Hussain 2020)



COVID CHALLENGES

Ethics of knowledge gathering

Adult recruitment via social media – is it inclusive?

Am I behaving appropriately - education and youth services are already overwhelmed – extra burden?

Gathering a different knowledge?

Temporary Covid-induced low-income families – are they a different type of family to longer-term low-income families? Does it matter?



WHAT IS COVID, IN MY RESEARCH?

- a) The context
- b) An exacerbating factor
- c) Of interest in its own right?

My time-related puzzle. Will this become clear?

Covid has taught me I cannot always race ahead to gather data in isolation, but must respond to external factors and learn to slow down (Stengers 2018)





Young people's transitions to the labour market in Covid 19

Karen Tatham School of Sociology and Social Policy
edu1kjt@leeds.ac.uk

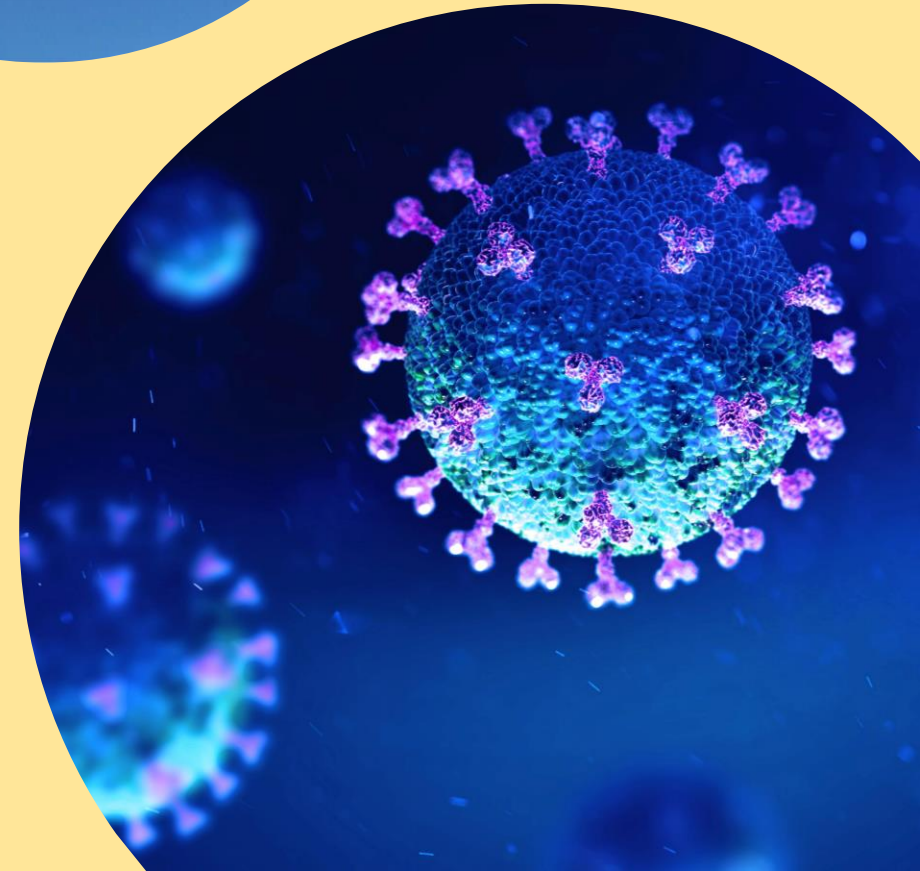
Fieldwork Sept 2020-Sept 2021

- A repurposed qualitative study exploring young peoples' ability to secure decent work
- Explored through the lens of Level 4/5 qualifications in construction and textiles manufacturing in a Northern city region
- Taking place during Covid 19 and in the post pandemic period
- 30 semi -structured interviews with local policy makers, educators, employers and young people



Young and seeking work 2020

- Recessionary job markets create multilayered disadvantage ; competition from graduate under employment, and displaced older workers, and large numbers of other young people displaced from Covid affected sectors
- Young at particular risk – protected by skills/qualifications
- Risk of lifelong economic scarring – seen in 1980s and 2008 crash
- Pre-Covid increasing interest in Level 4/5 qualifications – driven by employers – these are equivalent to Foundation at university
- Increasing sociological interest in social and cultural capital formation and employability through employer integration into education



Theories of youth transition during Covid 19: old or new patterns?

“If the concepts through which we express our understanding of youth transitions are in any way adequate, they should remain effective unless profound, epochal, social and economic transformations push a metaphor to the limits of its elasticity”

Andy Furlong (2009) Revisiting transitional metaphors: reproducing social inequalities under the conditions of late modernity, *Journal of Education and Work*, 22:5, 345,





**HAVE AN
ORDINARY
DAY...** 😞

Ordinariness in extraordinary times.....

Initial themes emerging

- The pandemic is having significant economic and education impact for all participants with new risks from infection, digital exclusion, and lockdowns, alongside familiar patterns of socioeconomic disadvantage
- Individuals and organisations under stress
- In my fieldwork period since Sept 2020 we have had two local lockdowns, one national lockdown, and Brexit is to come
- Despite these huge contextual changes, narratives of education to employment transitions by stakeholders consistently reflect 'old' priorities for young people of building employability and aspiration
- Cruel optimism or rational choice?



My time puzzle

A critical moment?

How do I reflect in my data analysis the ever changing social and economic context from Covid during my fieldwork?

A vintage telescope with a black body and brass-colored fittings is mounted on a dark, rectangular base. It is positioned on a rooftop, looking out over a city at dusk. The sky is a mix of soft pinks, oranges, and blues, with some clouds. The city lights below are blurred, creating a bokeh effect. The telescope is angled upwards and to the right.

PGR Theme 3

Imagined futures:

Transitions to 'adulthood'

*Presentations from Emma Hyde
& Tomás Puentes León*

School of Sociology & Social Policy

Subjective orientations to the future amongst
young adults living with parents:
Engaging with the past & present to explore housing &
independence trajectories

• • • • •

Emma Hyde
ss13e2h@leeds.ac.uk
School of Sociology & Social Policy

Reeling in the years: Covid and the boomerang generation

The pandemic is pushing young adults back home with their parents as rising rents, closed off campuses, and travel bans create a new kind of boomerang generation.



Katrina Murray and her mother Stephanie are getting used to being cooped up together again at home in Co. Offaly. Photo: Brian Arthur

Lifestyle > Family > Parenting

At 31, I still live at home with my parents – and I wouldn't swap it for the world



Nick Stewart with his parents, Angus and Patricia. CREDIT: EDDIE MULHOLLAND/TELEGRAPH

Million more young adults still living with parents

Rise blamed on high rents and house prices



Last year 3.4 million people aged 20-34 lived with their parents, the ONS has estimated. ALAMY

Generation Covid: 'My plans for the future have been trashed. Now what?'

Second lockdown? For graduates like me it's terrible news, says Flora Henry, 24, who wants a job – and a life

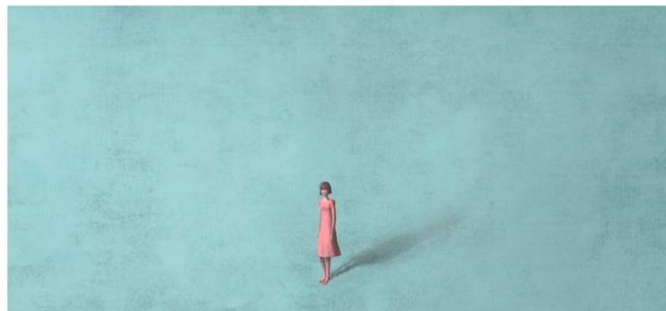


Flora Henry at her parents' house in Somerset this summer. SHUTTERSTOCK/PAUL HARRISON

'I moved out of my parents house at 17. I didn't expect to be living here a decade later'

Heather Morton, 26, is part of the 'boomerang' generation. Research suggests two thirds of young adults in Britain are living with their parents as a result of job insecurity, unaffordable housing and Covid-19

Tuesday 20 October 2020 16:46

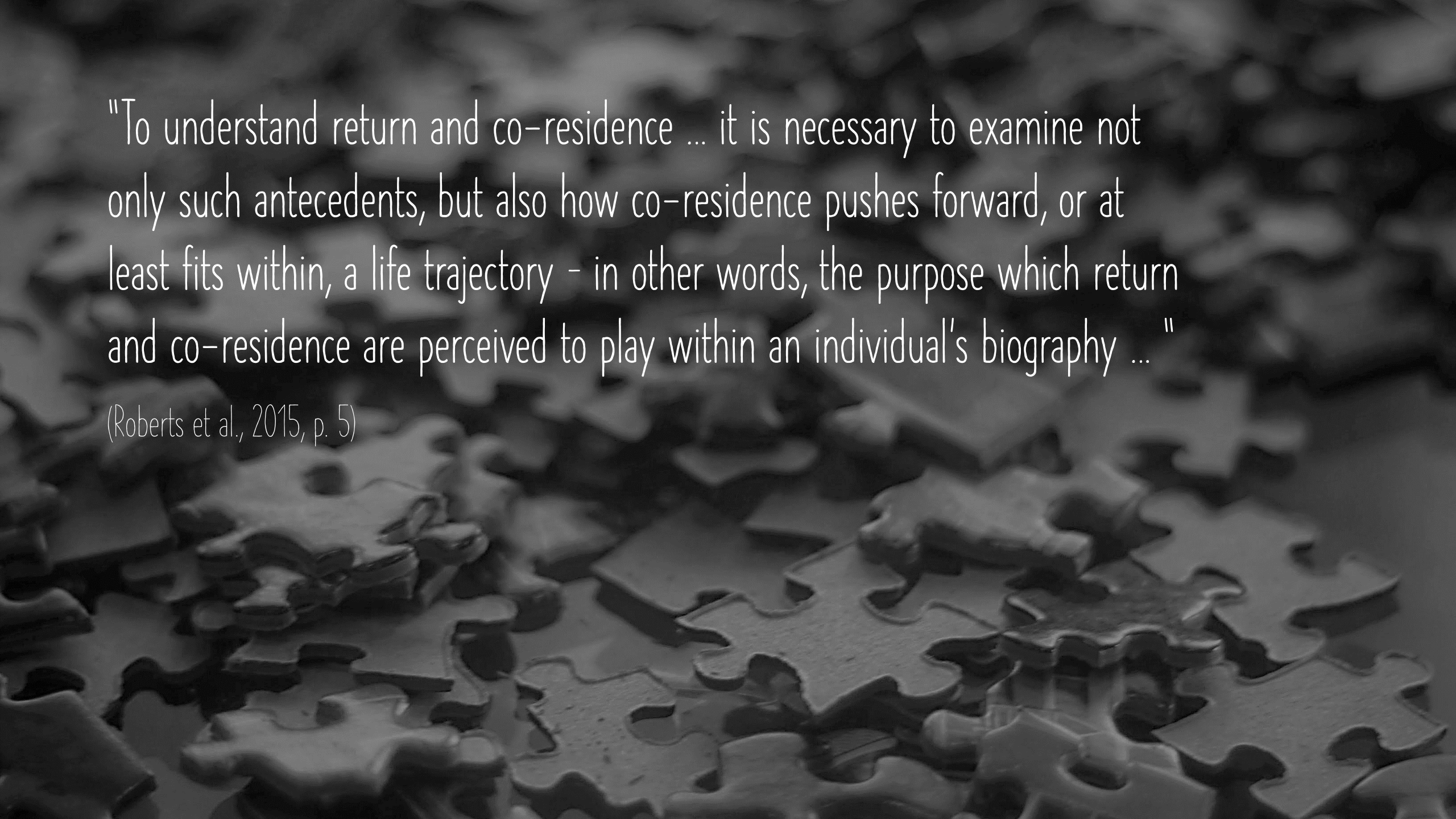


The stay-at-home sons and daughters of the housing crisis

By Hannah Richardson
BBC News education and social affairs reporter

8 February 2019





"To understand return and co-residence ... it is necessary to examine not only such antecedents, but also how co-residence pushes forward, or at least fits within, a life trajectory - in other words, the purpose which return and co-residence are perceived to play within an individual's biography ... "

(Roberts et al., 2015, p. 5)



"... it is important... to consider how the present context of people's lives shapes how people think about the past & the future ... planning is premised upon contextual factors that are often taken for granted but which may last into the future (e.g. parental support)" ... (Brannen & Nilsen, 2007, p. 158)



SORRY
WE ARE
CLOSED

COVID-19

"Even if we *have* seen the arrival of a new social generation defined by a greater commonality of pressures and predicaments this does not mean that familiar social structural inequalities - by social class, gender or race - are now incapable of shaping the experience of, and responses to, those pressures and predicaments"

[On the 2008 financial crisis]

(Allen, 2016, pp. 817-8)

Navigating interdependent futures in young adults with intellectual disabilities and their families in the transition to adulthood in Chile

Tomás Puentes León
PhD Researcher
ml17tfpl@leeds.ac.uk



RESEARCH AIM

OBJECTIVE

- Exploring navigation through support and negotiating *independence* in the transition to adulthood in Chile

Understanding of
Independence

Young adults
involvement

Aspirations for the
future

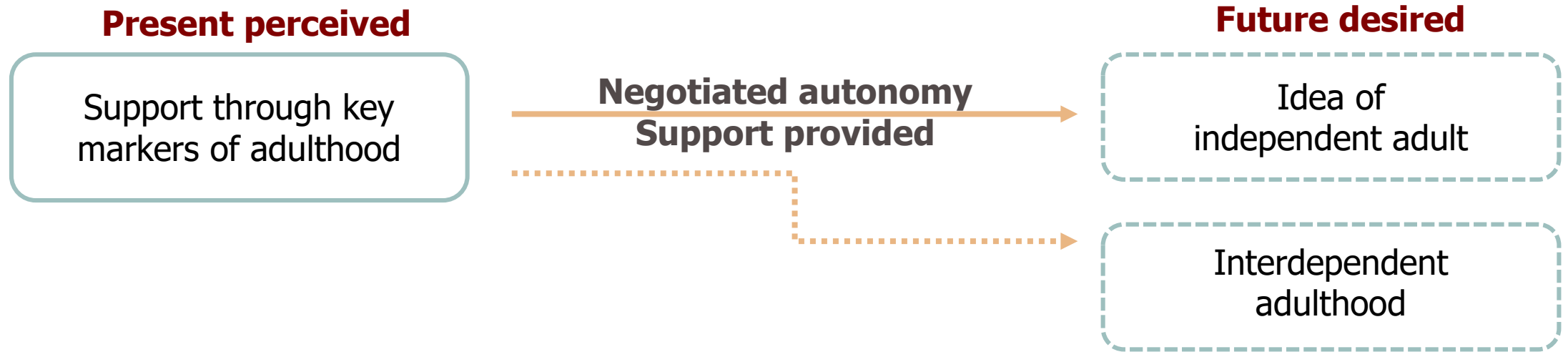
Wider support in
the transition

METHODOLOGY

- Qualitative approach
- Interviews (online) with young adults, parents and siblings
- The approach considers a set of previous dialogues with gatekeeper's organisations and with families



ASPIRATIONS FOR THE FUTURE



- Normative idea of adulthood
 - Based on key markers: employment, family/partner, living independently
 - A need to challenge
 - Disabling barriers: Questioning opportunities and conditions
 - Ableist categories: Questioning the options available for choices
- Rather than one future, a mutual idea of futures



Final reflections on time and temporality in social research ...

